



## HOSPITALITY



STAND OUT

We see your facility not for what it is, but what it can be. As your go-to source for premier quality product solutions, we'll help you get more out of every square inch, while making it easier for your staff. Every SICO® solution is forged from insights, engineered through innovation and built to last.



SOLUTIONS INDEX

|                        |    |
|------------------------|----|
| TABLES                 | 1  |
| BUFFET STATIONS        | 24 |
| STAGES                 | 34 |
| DANCE FLOORS           | 46 |
| MOBILE SLEEPER/WALLBED | 52 |

# INNOVATION TIME

*Since 1951, we have been dedicated to crafting the most advanced innovative product solutions that help facilities stand out and guests take notice.*

*No one has delivered innovation over time like SICO®.*



## SOLUTIONS INDEX

|                        |    |
|------------------------|----|
| TABLES                 | 1  |
| BUFFET STATIONS        | 24 |
| STAGES                 | 34 |
| DANCE FLOORS           | 46 |
| MOBILE SLEEPER/WALLBED | 52 |





## TABLE SOLUTIONS

*With so much riding on your tables, you need a partner you can trust. Count on SICO® for the diverse solutions, solid workmanship and innovative features to make every set-up smooth and every guest experience perfect.*

### *Meeting & Banquet Tables*

Whether they're getting down to business or getting ready to party, your guests will be impressed by the quality, style and sophistication of our meeting and banquet tables. Select from basic plywood tables, to a wide variety of shapes, sizes and laminate patterns. SICO's tables complement any space while featuring legendary craftsmanship, portability and storage conveniences.

### *Event Tables*

Our innovative event tables are designed to enhance and accentuate creativity. Meeting clients needs from food presentation to social and learning applications has never been easier. SICO's event tables provide flexibility while maximizing your event space. Creating memorable guest experiences while minimizing strain on your staff.

### *In-Room Dining*

Deliver a five-star experience right to your guests with our stylish, sturdy room service tables. Thoughtfully designed with oval and square table tops. SICO® room service tables offer enough dining space for up to four adults. With a large table top surface and extra leg room, our tables create an exceptional in-room dining guest experience. Easy rolling tables makes delivery smooth for your staff, while our non-metal contact frame makes for a quiet delivery to your guest.



# EVENT TABLES



## Nest for Storage, Nest for Style

Design sense meets common sense. Our stunning nesting tables create a variety of arrangement options to meet multiple usage needs, while also offering practical, space-saving storage simplicity. Now that's smart!



## Live Edge

With their rustic, Maple or Oak tops, these tables exude a truly natural charm. A perfect choice for facilities that want an organic, natural look.



## Socializer

Elevate your guests' experiences with our Socializer selections. Featuring tiered heights that complement a sit-down dining or standing social event, these versatile favorites maximize your serving flexibility.



## Nesting Tables- Wood Legs

Hand-crafted from Red Oak or Maple wood veneers in a variety of finishes. These nesting tables feature a classic, clean, simple design. Arrange in traditional or unconventional layouts creating unique serving and action stations. Available in a set or sold separately.



# EVENT TABLES



## Nesting Storage

How do we fit so much catering innovation into such a small space? By creating tables that can roll, fold and nest into each other to store in a compact space – until your next big upscale event.



## Sophisticate

True to its name, our Sophisticate catering table is a classy combination of style, mobility and durability. Ideal for any upscale event – from catering to chef demonstrations – the Sophisticate tables are available in a variety of finishes making it the perfect choice for any upscale linenless event.



## Sophisticate Plus

The Sophisticate Plus offers eye-catching style, linenless convenience and maximum mobility along with another impressive innovation – holding or induction cooking units built right into its durable tabletop. You'll be assured that your dishes are at the ideal temperature, from the first serving to the last. That's catering with confidence.



# EVENT TABLES



### *Deluxe Catering*

A linenless catering option, the deluxe catering table combines an upscale look, with a large serving area. Available in a variety of laminate options, this table combines style, mobility, and durability in one elegant package.

### *Catering*

Finally. Tables designed to cater to your serving and pre-set needs. Our versatile catering tables can be in the kitchen and rolled into use by one person, reducing labor costs and minimizing noisy meeting interruptions. The versatile racks allow for extra storage.

### *Compact Storage*

We know that your commitment to creating a unique guest experience is endless, but your facilities' space is not. That's why our rugged catering tables also fold down easily for compact storage allowing you to store multiple tables in a tight footprint.





# MEETING & BANQUET TABLES



*Plywood  
Armor-Edge® FLT*

These premium plywood folding leg tables are built to last for years. With the rugged Armor-Edge®, heavy-duty legs, aircraft lock-nuts and bolts, and expansion rivets instead of screws, SICO's plywood tables provide years of trouble-free operation.

*Linenless  
Armor-Edge® FLT*

Achieve elegance without the expense of linens with our versatile Linenless Armor-Edge® FLT banquet tables. Choose from a variety of sizes and eye-catching laminates. Eliminate the need for costly banquet linens while creating a unique experience for your guests.

## Transport Caddies Give You a Leg Up

Minimize staff strain and downtime by using our heavy-duty transport caddies to stack and move our folding leg tables with ease. Each features built-in angle support bars and side rails to keep tables snug and secure and keep your operation rolling.





# MEETING & BANQUET TABLES



## Transport Caddies Give You a Leg Up

Minimize staff strain and downtime by using our heavy-duty transport caddies to stack and move our folding leg tables with ease. Each features built-in angle support bars and side rails to keep tables snug and secure and keep your operation rolling.



## Linenless Rectangle FLT

Achieve elegance without the expense of linens with our versatile Rectangle Folding Leg Tables. Choose from multiple leg styles, and a variety of sizes and eye-catching laminates, as well as an optional removable modesty panel. They're the go-anywhere meeting tables that help you utilize virtually any space smarter.



## Plywood Rectangle FLT

These premium folding leg tables are built to last from edge to edge with heavy-duty legs, aircraft lock-nuts and bolts, expansion rivets and our rugged Armor-Edge® technology. Choose sizes to match your needs and space configurations.



# MEETING & BANQUET TABLES



## Nesting Storage

Your hard-working staff will appreciate how our MultiApp tables fold and nest together effortlessly and can be stored away in a remarkably small space.



## MultiApp

With the mobile, versatile MultiApp table, you can be meeting-ready in seconds. It requires no caddy so it can be rolled into action by just one person. Choose from a variety of trending laminate colors to match your décor – each with our rugged Armor-Edge® edging. Also available with data ports.



## MultiApp IIS

With its clean, classic colors and lines, this table makes a statement. Featuring dual-sided seating and ample leg room, the MultiApp IIS lives up to its name as a multi-purpose table. Use as a conference, catering, or banqueting table. The applications are limitless. Durable swivel casters make mobility easy.



# MEETING & BANQUET TABLES



## Nesting Storage

Our Pacer tables are just as impressive in storage as they are in service. When not in use, they fold easily for compact, upright placement in even tight areas. Another space challenge solved!



## Pacer

With the Pacer's smart design and variety of shapes you can fit more tables into one space and increase your seating capacity by up to 32%. Plus, its stylish, yet rugged, frame can be folded and rolled effortlessly into storage – by just one staff member. That's SICO® simplicity.



## Pacer II

The Pacer II takes the Pacer's durable design and style to the next level. With its seamless tabletop, reinforced with SICO® Armor-Edge® edging, and attractive colors and shape options, the ultra-mobile Pacer II empowers you to quickly transform any area into a productive meeting space.



# MEETING & BANQUET TABLES



## Conference Table

With its upscale boat-shaped look and compelling contours, this table will enhance your reputation as a premier meeting venue. It combines the beauty of a traditional conference table with our legendary durability and easy fold-and-roll design. It even features an optional built-in data port and outlet to power winning presentations.

## Compact Storage

We apply as much engineering innovation to product storage as we do product performance. For example, our spacious conference tables fold down quickly into a tight vertical formation and can be rolled away in seconds, by just one person. It doesn't get much easier than that.

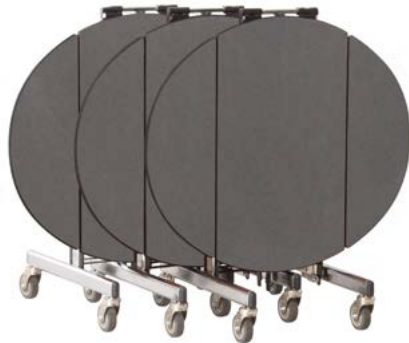






*Nesting Storage*

Optimizing your storage room is a breeze with our room service tables. They fold easily and roll together into a tight vertical nesting alignment. And there's no lifting needed!



*Rigid-Frame Bi-Fold*

Our Rigid-Frame Bi-Fold table offers a smart balance of everyday toughness and an aesthetically pleasing design. With a 16-gauge steel frame and a sleek and spacious rectangular tabletop, it has the strength and style to get the job done right. Leaves fold down for transport and storage, however the table top does not flip.



*Tri-Fold*

Exclusive SICO® design, the Tri-Fold is the only table available where the leaves lock in an upright position for transport. This feature, available on both the oval and square top, greatly reduces spillage and breakage. The top easily tilts to a vertical position for storage.



*Bi-Fold*

The Bi-Fold table is available with an oval or square top. Leaves fold down for transport, then fold out for service. A durable and rugged table for operation, this premier in-room dining table will allow you to create a premier in-room dining experience for your guests.



*Uni-Fold*

Our Uni-Fold table is ideal for single or double-serve situations and smaller plate presentations. Like all SICO® tables, it's designed for smooth, quiet rolling on any surface, so dishes won't rattle or tip and your staff won't disturb guests. The perfect combination of performance and style.



# IN-ROOM DINING



## Food Warmer Transport

Place a food warmer on the rack below a room service table and deliver your guest's in-room dining cuisine at just the right temperature.



## Unit-to-Unit Rack Connection

Connect the lower racks of room service tables to allow for one in-room dining attendant to deliver and pick up a train of multiple tables. Easy for your staff and efficient for your bottom line.



## Larger Casters (Optional)

Choose a larger 5" resort caster for easy rolling over rough terrain. Constructed for durability and easy cleaning. One person can easily roll and maneuver tables.



## Table Guide (Optional)

Ask for our optional Table Guide to make navigating hallways and elevators easier for your team.



# IN-ROOM DINING



## Active Storage

Store, heat and transport up to six food warmers with this convenient caddy that includes swivel casters and a master power unit into which you can plug your warmers. It makes kitchen prep easier and meal delivery a snap!



## Food Warmer Racks

Free up floor space with our efficient food warmer storage racks. Available in single-rack (holds nine warmers) or double-rack (holds 18 warmers). These innovative gravity-fed systems will ensure your warmers are ready for use with every guest order.



## Telescoping Handle & Wheels (Optional)

After delivering an impressive culinary experience on a room service table, a telescoping handle and wheels added to the warmer makes it easy to transport the food warmer back to kitchen.



## Food Warmers

Give your guests your best by choosing SICO® as your source for quality food warmers – in electric or solid fuel options. Crafted with stainless steel and aluminum exteriors, these units have built-in thermostats to maintain ideal temperatures. Plus, they stack and store easily and shelves remove in a snap for streamlined cleaning and maintenance.





## BUFFET STATION SOLUTIONS

*Give your culinary creations the presentation they deserve by using SICO® mobile buffet stations to entice, inspire and serve your guests in total style.*

### *Ovation Buffet Station*

Bring modern, streamlined style to your buffets with our Ovation line. With everything from carving to warming and side stations, you'll get practical solutions with a cool, clean, contemporary touch.

### *DECO Buffet Station*

With captivating, classic designs, sizes and component options for serving foods and beverages, our DECO line has everything you need for a premier buffet experience.

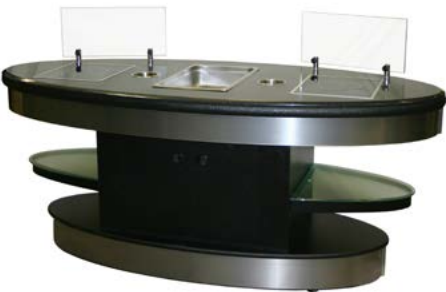


# OVATION BUFFET STATIONS



### Carving Station

Bring the excitement of live chef prep to your guests! Complete with a heated cutting tray, two induction warming units, heat lamps and more, this fully loaded mobile unit makes it easy to set up a chef action station throughout your facility.



### Cooking Station

Smartly equipped and effortlessly mobile, the Ovation Induction Cooking Station makes it easy to put on a stellar cooking show anywhere in your facility. With two induction cooking units, a full size hotel pan, two bain maries, and a NSF-certified quartz top, the Ovation cooking station is ideal for any hot presentation.



### Warming Station

Keep your food warm and your image hot with Ovation. This eye-catching station features three induction warming units that deliver consistent, controlled heat, handy side shelves and a hidden storage cabinet for extra plates. Plus, it's mobile, so you can take it to where the action is, anywhere in your facility.

### Ovation Multi-Purpose

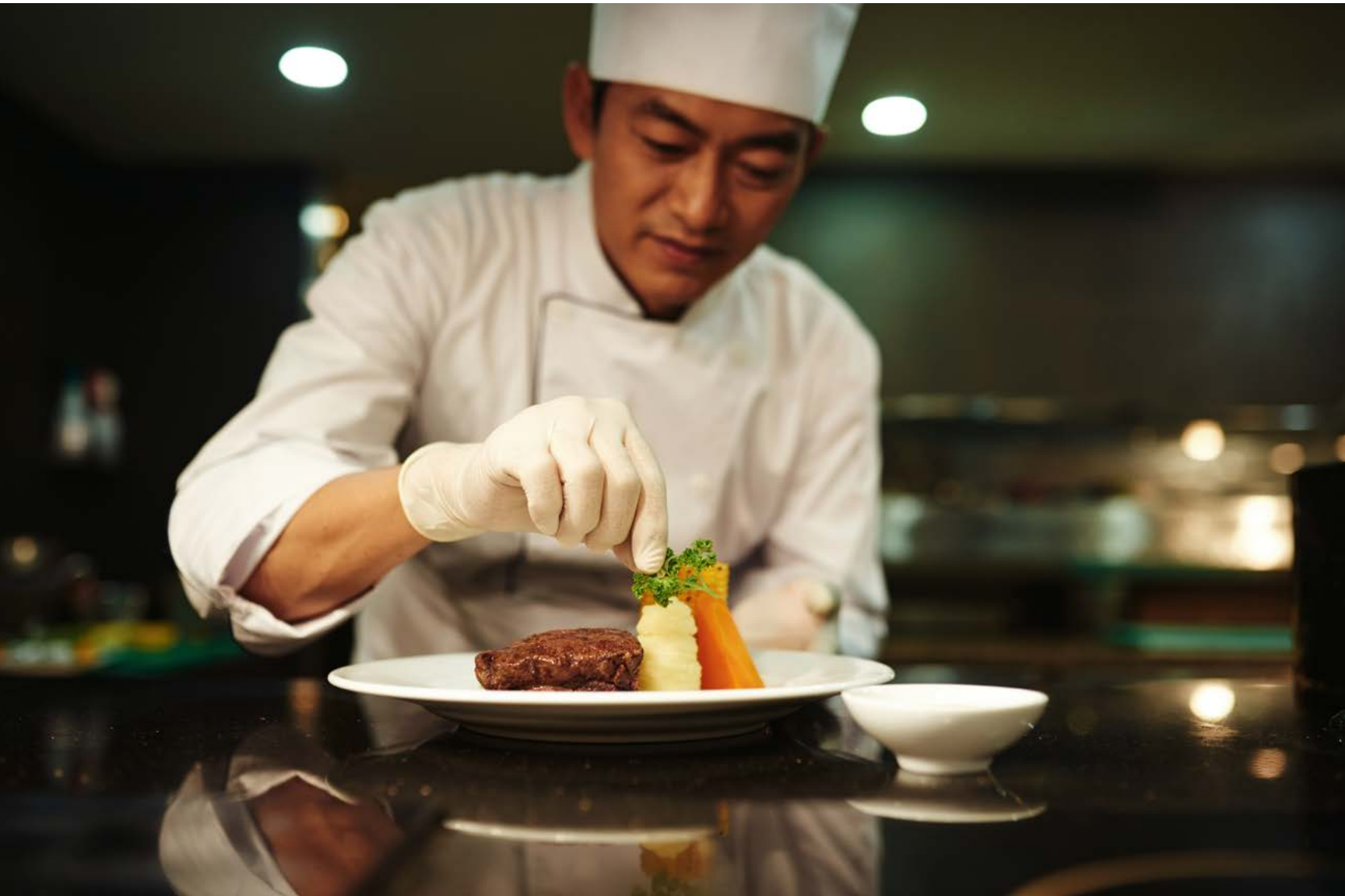
This ultra-flexible ambient top station with recessed power receptacles is as versatile as you are, giving your team more space to showcase and serve your culinary delights. From its NSF-certified, quartz top to its decorative fascia, it's the ideal combination of performance and style.





# OVATION BUFFET STATIONS

## BUFFET STATIONS



### *Food & Beverage*

With multiple tiers and an attractive fascia, this upscale station will keep your quality foods and beverages chilled for maximum enjoyment. It features a large ice bin with built-in drainage, providing a streamlined set up for your operations.



### *Lowerator® Side Station*

The non-heated Lowerator® makes dish management simpler and safer. The perfect mobile companion to all Ovation warming and action stations, it can hold dozens of plates, bowls or cups and features a self-leveling system that keeps dishes in the right position for easy access and reduced mishaps.



### *Ambient Side Station*

For buffets that call for a little extra space, these mobile, easy-rolling units make an attractive add-on to any Ovation station. Gain valuable top space to add dishes or décor so you can meet more guest needs – and pull it off with matching Ovation style.

### *Cover for Storage*

Don't forget to include a protective storage cover with your Ovation buffet station order. It's a smart way to protect your station from dings, scratches and dust, and keep it in pristine condition.



*Lowerator® is a registered trademark of the American Wyott Corporation*



# DECO BUFFET STATIONS\*



\*Personalize fascia options on all DECO units.

## Multi-Purpose

This ultra-flexible ambient top station with recessed power receptacles is a great choice for any serving situation or need. Designed by and for executive chefs, it's available in a variety alluring body and top patterns.



## Hot Plate Warming Station

Keep your foods hot, fresh and at the peak of flavor with this cutting-edge warming station. Featuring a built-in electric tabletop hot plate and three elegant overhead heat lamps, it'll ensure that your dishes maintain just the right temperature and texture, serving after serving.



## Warming Station

This Warming Station wows both chefs and guests. Uniquely engineered to enhance your food presentations, it features three induction warmers for consistent temperature control plus a rugged quartz top, supported by a sturdy steel frame and your choice of stunning cabinet styles.



## Cooking Station

With multiple induction cooking units and other innovative tabletop features, eye-catching LED-lit colored panels and unmatched mobility, you can tell this Cooking Station was designed by chefs. Use its flexible, user-friendly design to position units individually or in multiple configurations.



## Carving Station

Discover today's most versatile portable Carving Station. With a large heated carving tray, two induction warming units, heat lamps and more, it creates the perfect stage for your chefs to showcase their culinary skills. Pick a design that matches your facility's motif!



## Side Station

Add tabletop space for extra dishes or a display with a matching Side Station.



# DECO BUFFET STATIONS

## BUFFET STATIONS



### *Sushi Station*

Loaded with upscale features such as a stainless steel refrigeration display unit, the DECO Sushi Station has everything you need to prep, perfect and serve an exotic sushi dining experience. And cleanup is easy too!



### *Food & Beverage*

Put innovation on ice with this advanced mobile solution from SICO®. From the artsy, mosaic pattern of its ice bin to its subtle accent lights, this is today's smartest and most stylish solution for keeping foods and beverages chilled and delicious.



### *Warming & Hot Plate Station*

With two induction warming units, a large hot plate and two heat lamps, this station is sure to keep your dishes tasting warm, fresh and fantastic. Use as a single action station or in conjunction with other stations.



### *Bar Station*

Serve up cocktails and sodas in style with a classy DECO Bar Station. Mobile and ready for action, it offers thoughtful features such as a spacious stainless steel work surface, ice bin, speed rails, and under-counter storage.



### *Ice Bin/Lowerator® Side Station*

Add a matching side station to include an extra ice bin and/or a handy Lowerator® that stacks, organizes and protects your valuable dishes.

Lowerator® is a registered trademark of the American Wyott Corporation





## STAGE SOLUTIONS

*When you're looking for dependable performance, it has to be SICO®. We're proud to carry a complete line of innovative portable staging solutions and accessories that bring solid support and impeccable style to any event. Set-up is simple. Take-down is easy. And our variety of mobile solutions make transport and storage stress-free.*

### Accessories

Our ramps, steps, drapes, backdrops and other accessories will add crucial functionality and safety as well as a touch of style to your stage performances. With SICO®, every detail is covered so every event you host can be spectacular.

### Performance Stages

Performers have enjoyed SICO® mobile and portable stages for generations, but your staff will believe our stages are the true stars of the show.

When your event requires an elevated platform for small regional or large national events, SICO's performance stages are a must. Design to be easy to operate with minimal storage, SICO's performance stages provide an exceptional value for any venue.

### Meeting & Banquet Stages

In hospitality, every day brings a new event and a different presentation need – from small-group sessions to posh galas, some planned for and some not. Stay prepared for whatever the day throws your way with our reliable Meeting & Banquet Stages, with the portability, mobility and easy set-up that'll keep you ready for any event.



# MEETING & BANQUET STAGES



## 1800 Series

The dual-height and single height 1800 series offers all the advantages of a mobile folding stage, plus the added simplicity and speed of built-in height adjustability. A single person operation means rooms can be turned quickly, with minimal labor. This saves of both money and time for any operation.



## Tri-Height

Our Tri-Height mobile stage is available with three variable height adjustments and reversible decks, making for a versatile system. Designed for maximum set-up flexibility. The Tri-Height can be used as a head table riser, speaker platform, or runway. The possibilities are endless. Single person operation means rooms can be turned quickly, with minimal labor.

## Caster Transport

With SICO's mobile stage and risers systems, storage is a snap. Our units can be rolled away in minutes, freeing up your staff to focus on other important tasks.





# MEETING & BANQUET STAGES



## Storage Caddies

With SICO® stages and risers, storage is no sweat. Our solutions fold and fit easily into our storage caddies and can be rolled away in minutes, freeing up your staff to focus on other important tasks.



## X-Press

The SICO® X-Press Stage and Riser is designed with a sturdy build, in a lightweight frame, so it can be easily transported from one application to another. It sets up in a snap, by simply unfolding the frame and laying the deck into place. Choose from multiple deck surfaces, including our innovative Tuff Deck or carpet.



## Variable Terrain

A smart, dual-use product that maximizes space and productivity, our Variable Terrain solution can be set up as a performance stage or tiered risers for seated riser, choral or instrumental performances – indoors or out. You'll get multiple height options and stage units that can be locked together at the same height or in tiered set-ups, for strength and stability across every configuration.



## TechLite™\*

TechLite™ makes it easy to tailor a stage and riser system to fit small or large spaces – and without the need for tools. With adjustable and fixed heights, optional anti-slip Riga Heksa Plus Decking or carpet, our Power Lock™ leg-fastening system and more, the TechLite™ is a versatile performer you can count on.

*\*Patent Pending*



# PERFORMANCE STAGES

STAGES



## Venue Maker Pro™\*

This is staging innovation from top to bottom. The Venue Maker Pro™\* (VMP) includes features no one else offers: top-deck leveling, v-shape frame design for easy under stage access and the smallest storage footprint of any stage in its class. SICO® does it again!

\*Patent Pending

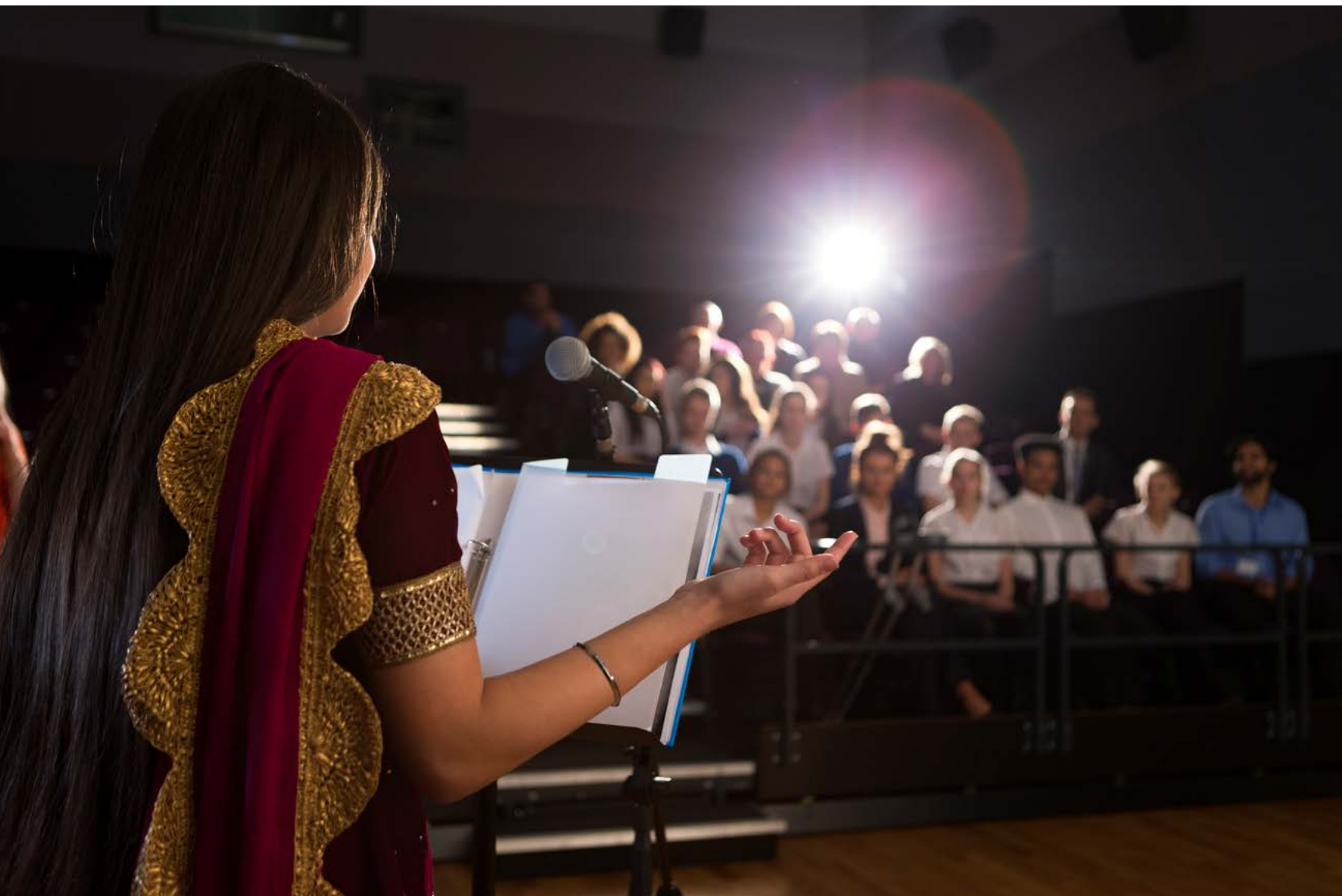


## Efficient Storage

SICO® innovation extends beyond the stage, to include storage solutions, too. All of our performance stages are designed for secure, compact, low-stress storage. Because a great stage shouldn't have to take up a great amount of space.



# STAGE ACCESSORIES



## ADA Ramps

Our ADA-compliant ramps are made up of modular, mobile folding units that set up quickly and easily, and are adaptable to each of our various stages. All ramps are carpeted, include side guardrails and designed with a gradual incline of 1" per foot (2.54 cm/m) – for smooth, confident stage entrances and exits.



## Articulating Steps

Articulating steps can be raised and lowered to enable use with a wide variety of stage heights. Steps attach to the top of a stage deck which provide support for the steps. Available in carpet or black vinyl on the tread.



## Modular Steps

Modular steps are fixed steps that are easy to operate and have a smaller storage footprint than articulating steps. Add additional step platforms to create the necessary height. Each platform rolls and locks into place with ease so performers can enter and exit the stage gracefully.



## Drapes

SICO® Drapes add a first-class finishing touch to your staging, secured by continuous hook and loop fastener strips that make it extra-easy to attach the skirting. Our draperies are made of attractive, flame-retardant fabric that retains its beauty over years of use.

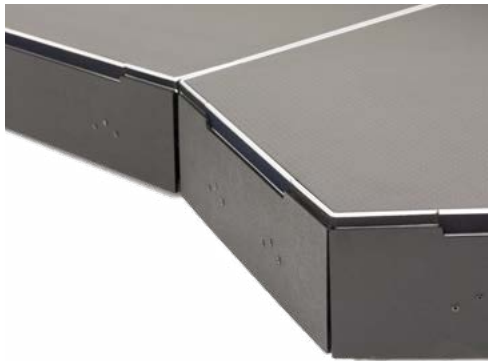


# STAGE ACCESSORIES



## Crowd Control Barriers

Crowd control barriers can help you keep order when and where you need it.



## Enclosure Panels

Use enclosure panels to create a finished look to a stage while adding safety for your performers.



## Guardrails & Covers

Safety is always your first priority and SICO® is here to help. Guardrails must be used with all of our stages and risers and we have options to fit all of our systems. We even include rail covers in multiple color selections to fit your staging décor.



## Chair & Table Stops

These rugged stops help optimize safety by ensuring tables and chairs won't slide off the stage. Made from steel bars and available in multiple lengths, they attach quickly and rest one-half inch above the surface of the stage deck.



## Backdrops

Our solid backdrops create a professional look and help focus the audience's attention on the performers, not on what's happening backstage.





## DANCE FLOOR SOLUTIONS

*SICO® invented the first professional portable dance floor in 1964 and continues to stay a step ahead of the competition. In fact, more dance moves and more dance memories have been created on SICO® floors than any other brand! When you want to give your guests the best, it has to be SICO®.*

### Laminate

Available in a wide variety of stylish laminates, our Cam-Lam\* or Starlight II\*-solutions for indoor-outdoor use, offer versatility so you can create a first-class dance environment for your guests virtually anywhere. They're maintenance-free and resist chipping, scratching and fading – protecting your flooring investment. Plus, they feature our positive Cam-Lock system for easy alignment and simple set-up and take-down.

*\*Patented*

### Wood Parquet

For guests who still require the beauty of real wood, our Original and Cam-Lock portable dance floor products are the right choice. They set the industry standard decades ago and still continue to be a popular option today. From their traditional, eye-catching parquet panels to their gold, silver or black Visi-Trim edges and simple set-up, these products are thoughtfully designed for your guests and your staff.



# LAMINATE DANCE FLOORS

DANCE FLOORS



## Storage Caddies

Save on take-down time and avoid hassles with our smooth-rolling storage caddies. Cleverly designed with separate spaces to hold dozens of panels as well as trim pieces, SICO's storage caddies make it easy to secure, store and safeguard your floor until the next big event.



## Cam-Lam\*

Available in a variety of laminate designs from a wood plank look to a modern or rustic finish. SICO's Cam-Lam dance floor delivers a maintenance-free finish that resists scratching and fading. And it features our positive Cam-Lock system for automatic panel alignment and a fast, secure fit – making set-up simple!

*\*Patented*



## Starlight II\*

With the rugged Starlight II, the sky's the limit. This safe, secure portable dance floor is built to withstand the rigors of outdoor use. It combines a high-pressure laminate surface with a high-density fiberglass reinforced foam inner core, positioned between sheets of sturdy aluminum. And our Cam-Lock positive locking system streamlines set-up and take-down.

*\*Patented*



# PARQUET DANCE FLOORS



### Cam-Lock

Available in classic Heritage Oak and Natural Oak styles, our Cam-Lock dance floor is the perfect choice for frequent usage. The Cam-Lock system makes aligning panels and trim fast and easy. The perfect solution for facilities who require the beauty of real wood and the convenience of a quick set up.

### Original

The Original portable dance floor is the perfect solution for facility that requires a durable yet economical portable dance floor. Lightweight and easy to assemble, SICO's Original portable dance floor provides a solid, stylish, solution for any event.

### Storage Caddies

The heavy-duty caddies for our dance floor panels ensure stress-free storage. With their spacious frames and separate compartments to hold deck and trim pieces, you'll roll away the floor with ease and confidence.







## MOBILE SLEEPER/WALLBED SOLUTIONS

*You don't need a lot of space to create a satisfying sleep experience. SICO® Mobile Sleeper/Wallbed Solutions allow you to transform any room into a bedroom, so your guests rest easy and you feel good knowing you're maximizing every room's ROI.*

### *Mobile Sleepers*

A comfortable sleeping solution for your guests. SICO's Mobile Sleepers utilize a conventional mattress and foundation optimizing your guests' sleeping comfort while enhancing your ability to market rooms and optimize your space. Our premier Mobile Sleepers with a standard or pillow top mattress, feature a lightweight design and swivel casters that allow the beds to be easily and quietly rolled to wherever they are needed.

### *Wallbeds*

Turn the room you have into the space you need. A meeting room by day and a sleeping room by night. SICO's wallbed solutions help you optimize your facilities space, while increasing revenue. Available in twin to king with unlimited cabinetry styles and options, SICO's wallbeds are the perfect solution.



# MOBILE SLEEPERS

MOBILE SLEEPER/WALLBED



### Standard Top

Treating your guest to a comfortable, quality night's sleep has never been easier. SICO's standard mobile sleepers utilize a conventional mattress and foundation which can generate additional revenue for your facility while providing the perfect night sleep for your guest.



### Pillow Top

For extra pampering and an ultra-plush sleeping experience, SICO's pillow top mobile sleeper is the solution for your facility. The pillow top mattress and foundation provide premier comfort.

### Roll Away with Ease

Each SICO® Mobile Sleeper features a lightweight design and durable swivel casters that allow you to transport the unit easily and quietly on any surface.





# CUSTOM WALLBEDS

MOBILE SLEEPER/WALLBED



## *Creates Multi-functional Space*

With custom designed cabinetry to complement your décor, transforming your hospitality suite from a meeting room into a sleeping room is simple. Rent your space twice in 24 hours for maximum revenue.



## *24/7 Sofa*

The convenience of a sofa with the sleeping comfort of a conventional mattress. The 24/7 system accommodates both. This wallbed system allows for maximum versatility.



## *Eurobed*

When space is at a premium, choose the Eurobed. It is the most space efficient choice in the down position as the bed is recessed into the cabinet. Lift and lower the bed with your fingertips. The European slot system adjusts to the contours of the body and replaces the box spring.



## *Room Maker*

The comfort of a real box spring and standard size mattress. The Room Maker can be floor or wall mounted. Pillows can store right on the bed when folded. Choose from elegant cabinet styles or custom cabinetry to match your room's décor and create a winning ensemble.



# SPACE. *Reimagined.*

With our products and knowledgeable professionals by your side, your environment becomes transformed and the experiences you offer do too.

Our FREE Space Design service can help you transform and maximize your space when using our products.

That's space reimagined. That's SICO®.



MultiApp Table  
Model: TUC22WQI7912BT

## MORE FROM SICO®

*There's no end to what you and your guests can do when you tap into the power of the SICO® product portfolio. In addition to the offerings highlighted in this catalog, our lineup includes these additional innovative options. To see more product solutions visit [www.sicoinc.com](http://www.sicoinc.com).*



3-in-1 ConverTable



Insta-Theatres



Attached Seating



# CONTACT ME.

Follow us on [LinkedIn](#)





**SICO Incorporated -**

Global Headquarters

**SICO America Inc.**

Tel: 1 800 328 6138

Fax: 1 952 941 6688

Email: [sales@sicoinc.com](mailto:sales@sicoinc.com)

7525 Cahill Road

Minneapolis, MN 55439

United States

**SICO Asia PTE LTD**

Tel: (65) 6500 0800

Fax: (65) 6500 0811

Email: [sales@sicoasia.com](mailto:sales@sicoasia.com)

1 Clementi Loop #06-06

Clementi West Logis Park

Singapore 129808

**SICO Europe Limited**

Tel: +44(0) 1303 234 000

Fax: +44(0) 1303 234 001

Email: [sales@sico-europe.com](mailto:sales@sico-europe.com)

The Link Park

Lympne Industrial Estate

Lympne, Kent CT21 4LR

United Kingdom

**SICO Japan Inc.**

Tel: +81(3) 3288 0145

Fax: +81(3) 3288-0146

Email: [info@sico-japan.com](mailto:info@sico-japan.com)

Daiwashoji Bldg. 1F

3-10-3, Kanda-Misakicho

Chiyoda-ku, Tokyo 101-0062

Japan

**SICO Middle East DMCC**

Tel: (971) 4 422 8259

Fax: (971) 4 422 8059

Email: [sales@sico-me.com](mailto:sales@sico-me.com)

Office 303

Dubai Arch Tower, Cluster G

Jumeriah Lake Towers

P.O. Box 440094

Dubai, UAE

**SICO South Pacific Limited**

Tel: +61(2) 4336 1333

Fax: +61(2) 4388 4643

Email: [sales@sicosp.com.au](mailto:sales@sicosp.com.au)

3 Blade Close

Berkeley Vale, NSW 2261

Australia